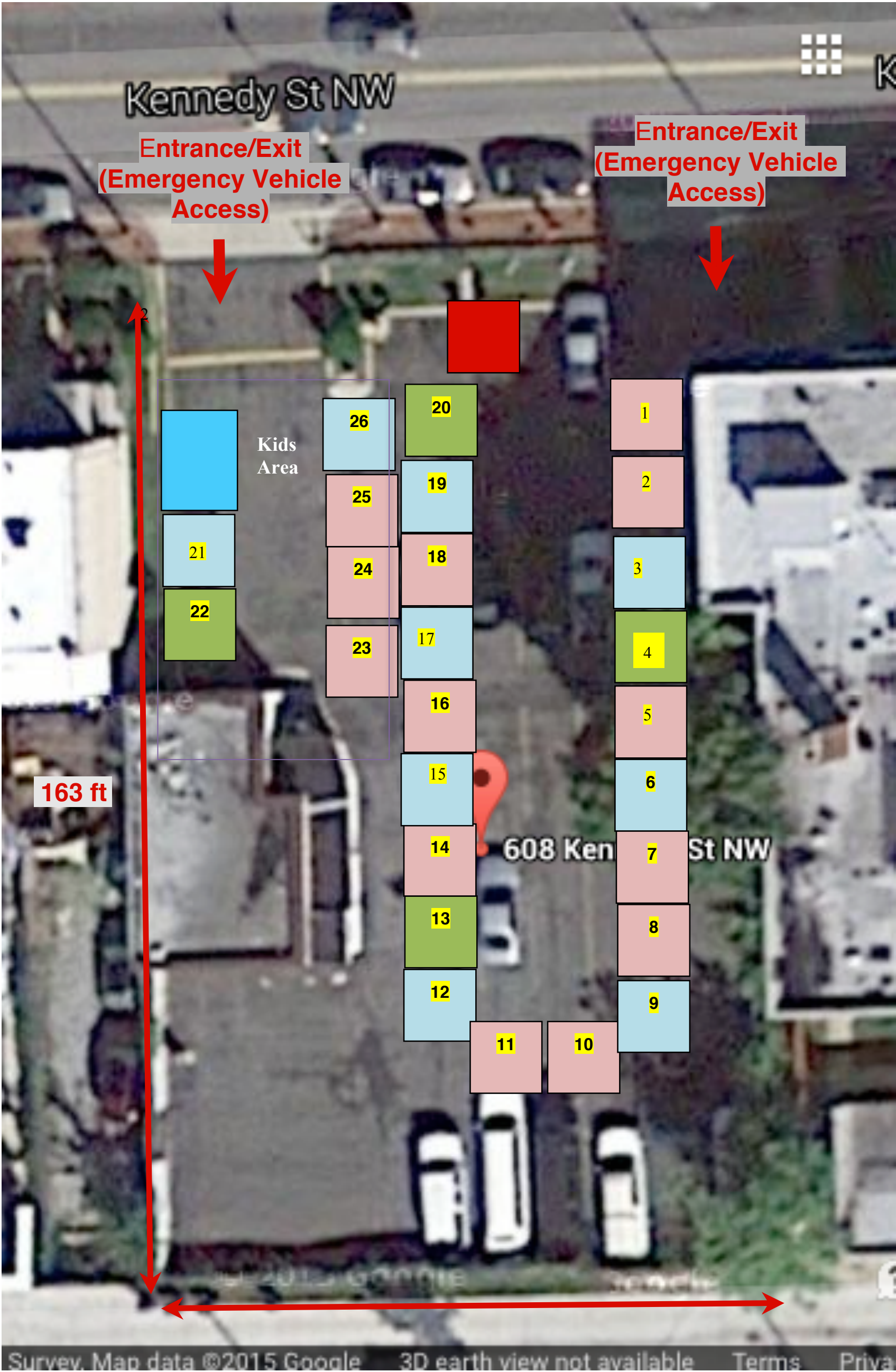
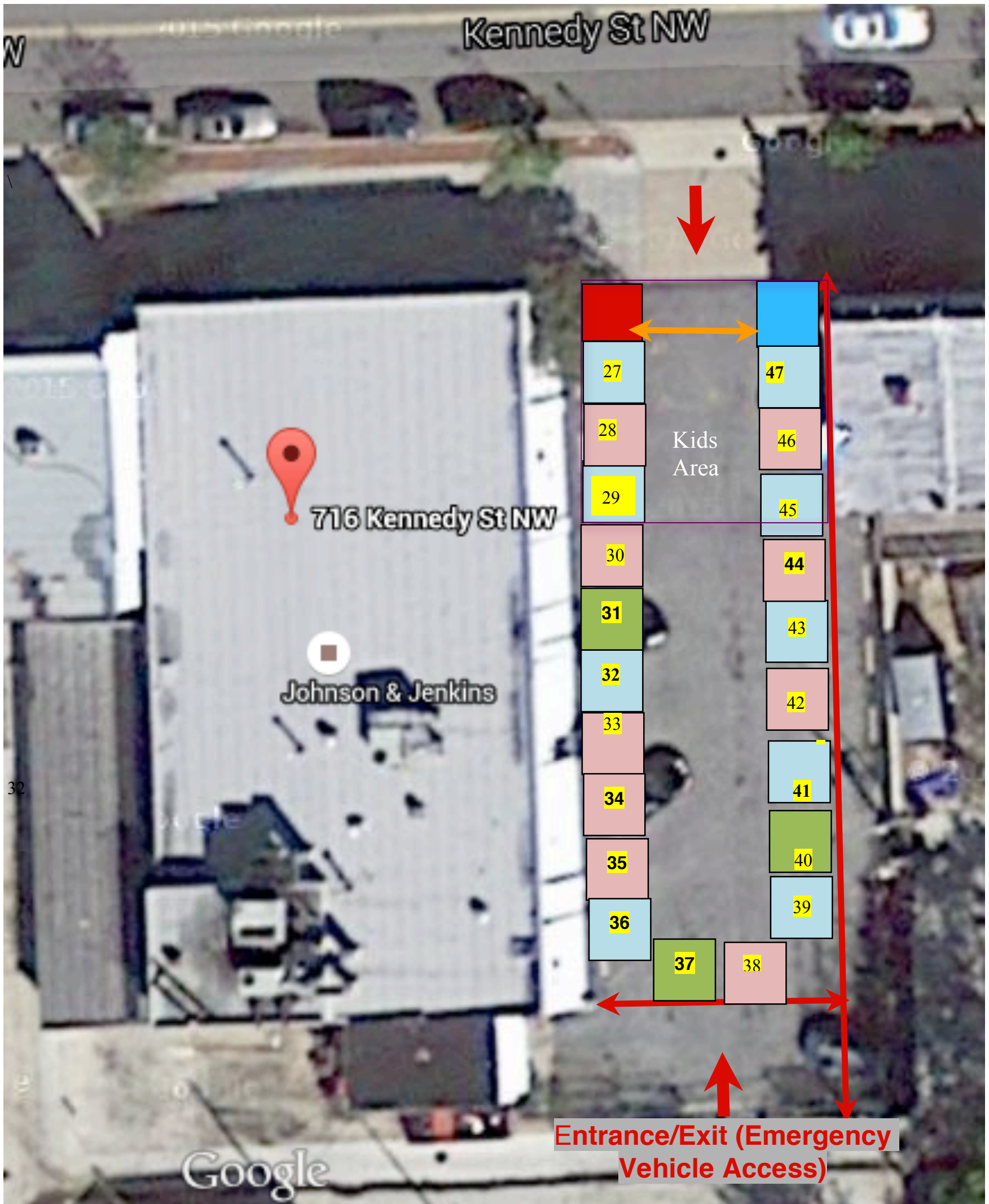







Kennedy Street Festival Site Plan - 608 Kennedy Street NW Lot (Site 1)



- Organizer's table. First aid station located here (10ft x 10 ft)
- Vendor (informational) (10ft x 10 ft.)
- Vendor (Products) (10ft x 10 ft)
- Government Agency (10ft x 10 ft)
- Activity Area - kids face painting /entertainment. PA system located here (20ft x 20 ft)

Kennedy Street Festival Site Plan - 716 Kennedy Street NW Lot (Site 2)



-  Organizer's table. First aid station located here (10ft x 10 ft)
 -  Vendor (informational) (10ft x 10 ft.)
 -  Vendor (Products) (10ft x 10 ft)
 -  Government Agency (10ft x 10 ft)
 -  Activity Area - kids face painting /entertainment. PA system located here (20ft x 20 ft)

Vendor Assignments

Vendor	Spot Assigned
Petworth News	608 - 1
First Trust Team	608 – 2
ANXO	608 – 3
Department of Energy	608 - 4
Solar Solutions	608 - 5
Toni D	608 - 6
GreenLine Real Estate	608 - 7
Housing Up	608 - 8
Top Hatz & Accessories	608 - 9
Washington Gas	608 - 10
Manor Park Citizens Association	608 - 11
Graphix Box Tattoo	608 – 12
DDOT	608 – 13
DC Water	608 – 14
Tranquil Treasures	608 - 15
Second Wind Crossfit	606 - 16
RBW	608 - 17
Human Rescue Alliance	608 - 18
Dishar Design	608 - 19
ANC 4D	608 - 20
Starfish Thrower	608 – 21
Councilmember Elissa Silverman	608 – 22
14th & Kennedy Farmers Market	608 - 23
Dance Loft	608 - 24
DC Community Carrott	608 - 25
Network Hair	608 - 26
Love Thy Cookie	716 – 27
Brighstart Daycare & Early Learning Center	716 – 28
TAI/The Bouffon Co.	716 – 29
Capital Park Realty	716 – 30
Coundilmember Robert White	716 – 31
Fearless Threads	716 – 32
Institute for Justice	716 – 33
Lighthouse Yoga	716 – 34
NorthWest Mutual	716 – 35
Ivy’s Tea Co.	716 – 36
Councilmember Brandon Todd	716 – 37
Frankly Real Estate	716 – 38
Galol Decor	716 – 39
4th MPD	716 – 40
Beads & Buttons	716 – 41
Wards 3 & 4 DC Prevention Center	716 – 42
Nia Photography	716 – 43
Menkiti Group	716 - 44
Jacq’s Dolls	716 - 45
Roots Public Charter School	716 - 46
Urban Jungle	716 - 47
All Around Strong	NOT ON MAP (508 Kennedy St.)
Brightwood Community Dialogue Center	NOT ON MAP (712 Kennedy St.)